

TERPS

SWR - OCSR

SAS - STOOV - GL - 300 - Y - P

THU - BGTL 1 25 JUL 95

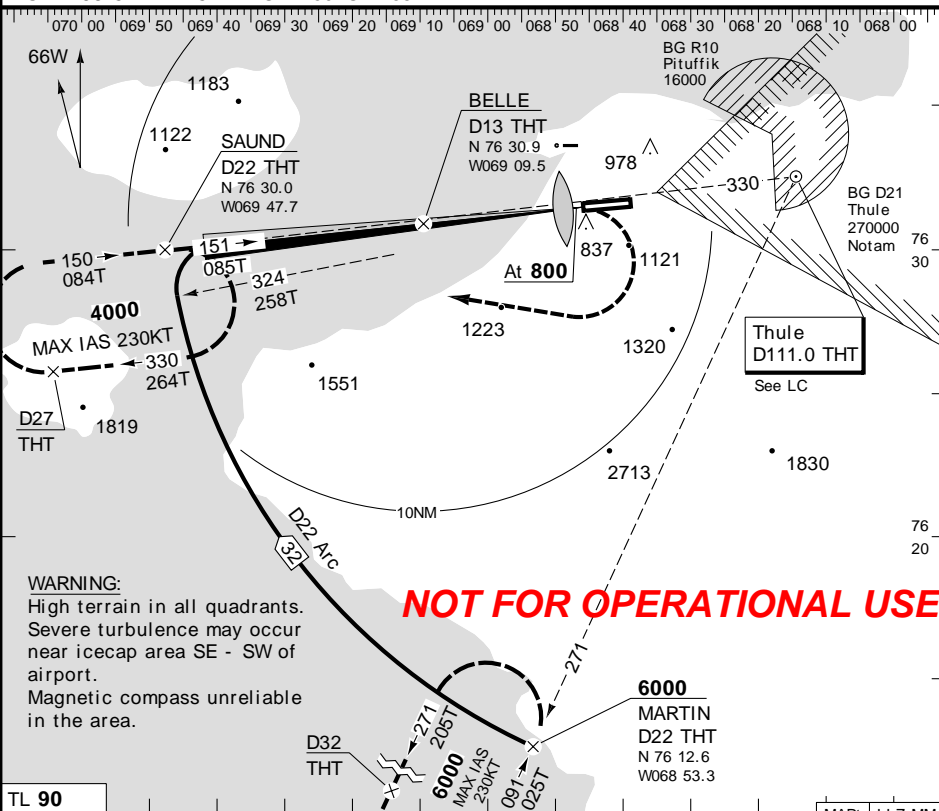
(ILS/DME) ILS - 15

N76 32.0 W068 42.0

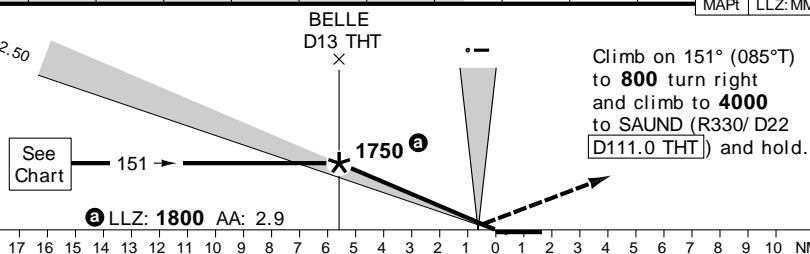
Thule APP RAD 134.10 119.90 OPR HR see LC  
TWR 126.20 OPR HR see LC

PAR: APP 134.10 OPR HR see LC

ILS 109.5 ITL 151° GP 2.50 GHT 58



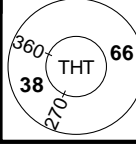
TL 90  
TA 6500



NM	20	19	18	17	16	15	14	13	12	11	10	9	8	7	6	5	4	3	2	1	0	1	2	3	4	5	6	7	8	9	10	NM
----	----	----	----	----	----	----	----	----	----	----	----	---	---	---	---	---	---	---	---	---	---	---	---	---	---	---	---	---	---	---	----	----

DP = D8.1 THT	MDA 460	100KT -	120KT -	140KT -	160KT -	180KT -
<b>APCH PROC</b>	<b>ILS+DME</b>	<b>LLZ+DME</b>	<b>PAR 15</b> *	<b>Circling</b> 2	<b>DH/MDH 3.9%</b> 243	
C	C	C	C	C	243	
Planning Min WX	100/0.8	100/1.2	100/0.8	1100/4.0	293	
DA	MDA QNH/Min VIS	410 0.8	460/1.2	410 0.8	1430/4.0	243

\* VOR/ILS must be OPR. 2 S of RWY CL only.  
 MISAP Climb gradient based on 3.9% up to 4000FT.  
 WARNING: When surface wind exceed 30KT from 191°-251°M expect moderate turbulence to 5000FT and severe downdrafts on final APCH RWY 15.  
 ADD to DA,MDA/Min VIS  
 APL ILS/ PAR 0/ 0.8  
 U/S LLZ 0/ 0.8  
 Other  
 Plan ALTN ADD 600/ 2.4



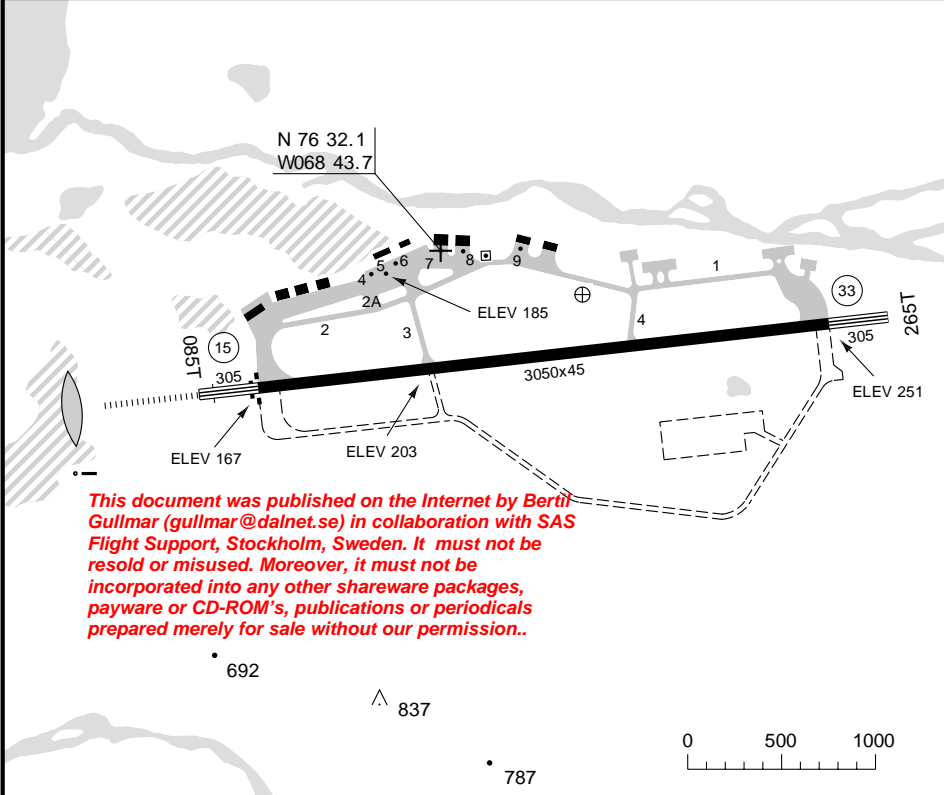
THR ELEV 203 FT/ AD ELEV 251 FT Change: Completely revised

THULE

GREENLAND

RWY	QFU	APL	THL	RWL	SLOPE
15	151	H-D	H	H	+0.8
33	331	-	-	H	-0.8

REIL, AVASIS 2.50

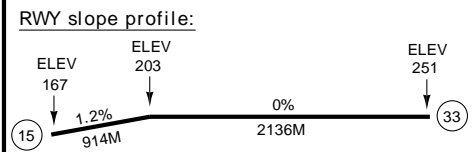


This document was published on the Internet by Bertil Gullmar (gullmar@dalnet.se) in collaboration with SAS Flight Support, Stockholm, Sweden. It must not be resold or misused. Moreover, it must not be incorporated into any other shareware packages, payware or CD-ROM's, publications or periodicals prepared merely for sale without our permission..

TKOF	CLG FT/ QFE	33	15
	VIS KM	200/ 0.8	1500/ 3.2

**TRAFFIC NOTES:**  
 Right hand circuit RWY 15.  
 APP/TWR and PAR OPR HR  
 MON - FRI 1300 - 2000  
 SAT 1300 - 1600  
 SUN and U.S. HOL CLSD.

**NAV:**  
 VOR Thule unusable 201°-231° (135°-165°T) below 9000FT beyond 25NM.  
 DME Thule unusable 070°-136° (004°-070°T) below 7000FT beyond 34NM and 136°-249° (070°-183°T) below 11000FT beyond 24NM.



AD HR:  
 MON - FRI 1100-2130  
 SAT 1100-1700  
 SUN and U.S. HOL CLSD  
 + PPR 6HR before TKOF.  
 (If DEST PPR 30 days)

Change: APN COORD, ARP, NAV, RWY profile

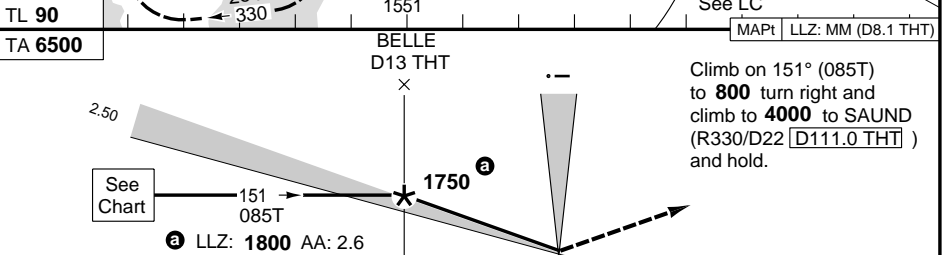
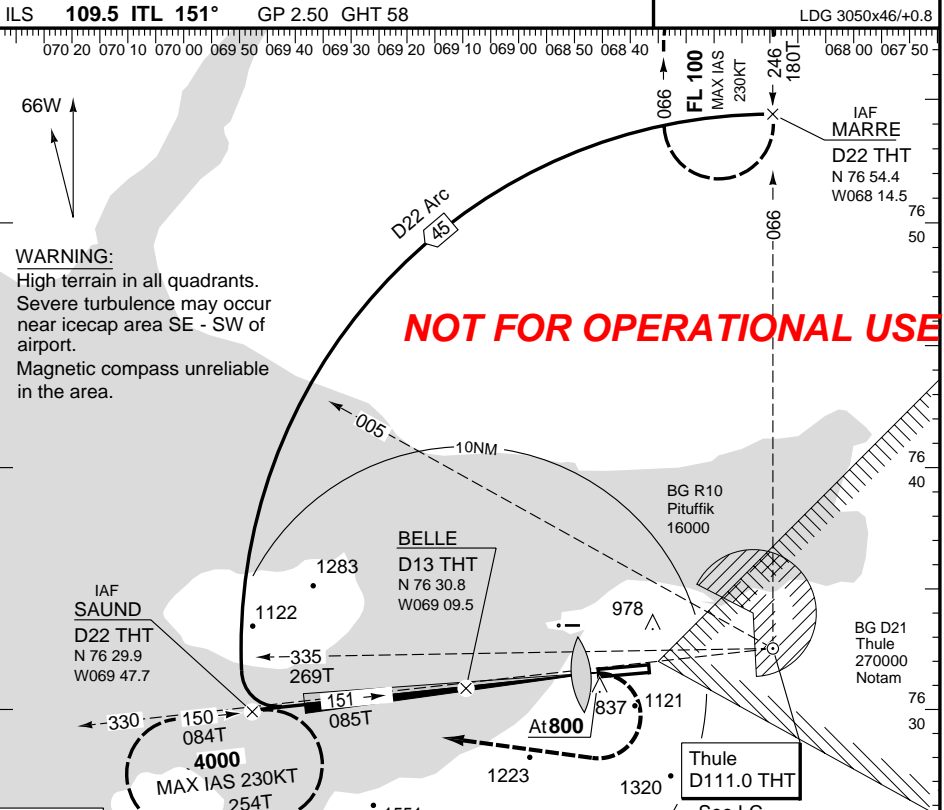
TERPS

THU - BGTL **2** 05 NOV 97 (ILS/DME 2) **ILS - 15**

Thule  
APP RAD 134.10 HAD  
TWR 126.20 HAD

PAPI 2.50

LDG 3050x46/+0.8



NM	17	16	15	14	13	12	11	10	9	8	7	6	5	4	3	2	1	0	1	2	3	4	5	6	7	8	9	10	NM
LLZ: FAF-MAPt/ROD	90KT	2:36/420	100KT	2:20/460	120KT	1:57/550	140KT	1:40/640	160KT	1:28/730																			
<b>STATE</b>	<b>ILS+DME 4.4% (V)</b>		<b>LLZ+DME 4.4% (V)</b>																	To obtain RVR multiply VIS by:									
ACFT	C	D	C	D																Day 1.5	Night 2.0								
<b>MIN</b>	<b>410</b> (200)		<b>540</b> (337)																										
<b>RVR-KM</b>	<b>0.80</b>		<b>1.2</b>	<b>1.4</b>																									
APL U/S	1.6		2.0	2.0																									
<b>(V) MISAP Climb gradient</b> based on 4.4% up to 4000FT. <b>Warning:</b> When surface wind exceed 30KT from 191° - 251°M expect moderate turbulence to 5000FT and severe downdrafts on final APCH RWY 15.																													

TDZ ELEV 203 FT/AD ELEV 251 FT Change: SRE, MAPt

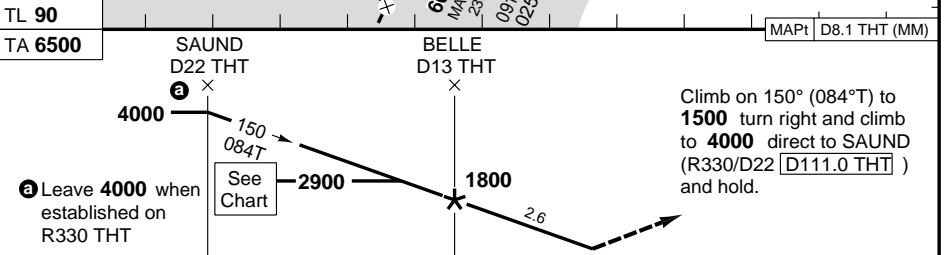
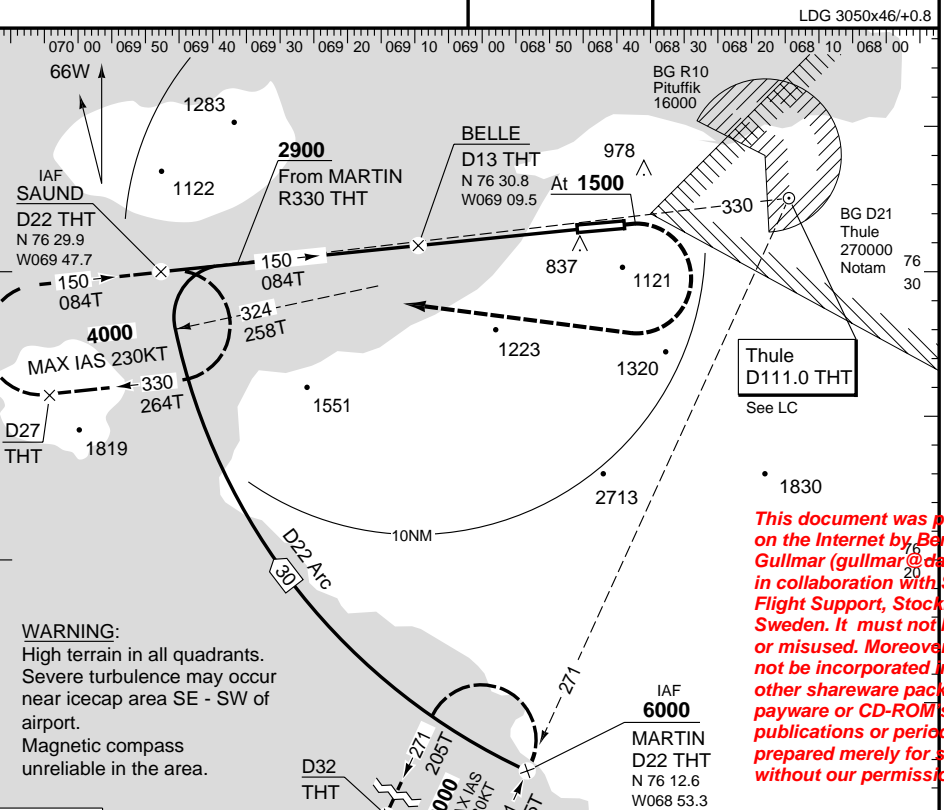
TERPS

THU - BGTL **3** (VOR/DME) **VOR-15**

Thule  
APP RAD 134.10 HAD  
TWR 126.20 HAD

PAPI 2.50

LDG 3050x46/+0.8



NM	20	19	18	17	16	15	14	13	12	11	10	9	8	7	6	5	4	3	2	1	0	1	2	3	4	5	6	7	8	9	10	NM
VOR: FAF-MAPt/ROD	90KT	2:36/420	100KT	2:20/460	120KT	1:57/550	140KT	1:40/640	160KT	1:28/730																						
<b>STATE</b>	<b>VOR+DME 4.4% (V)</b>																	To obtain RVR multiply VIS by:														
ACFT	C	D																Day 1.5	Night 2.0													
<b>MIN</b>	<b>1000</b> (797)																															
<b>RVR-KM</b>	<b>2.8</b>	<b>3.2</b>																														
APL U/S	3.6	4.0																														
<b>(V) MISAP Climb gradient</b> based on 4.4% up to 4000FT. <b>Warning:</b> When surface wind exceed 30KT from 191° - 251°M expect moderate turbulence to 5000FT and severe downdrafts on final APCH RWY 15.																																

TDZ ELEV 203 FT/AD ELEV 251 FT Change: SRE

*This document was published on the internet by Bertil Gullmar (gullmar@dalnet.se) in collaboration with SAS Flight Support, Stockholm, Sweden. It must not be resold or misused. Moreover, it must not be incorporated into any other shareware packages, payware or CD-ROMs, publications or periodicals prepared merely for sale without our permission..*

© SAS Flight Support - CUS - 300 - Y - P